

KEY PLAN



ISSUE DATE:	12/13/2018
ISSUED FOR:	65% SUBMITTAL
DESIGNED BY:	
DRAWN BY:	
CHECKED BY:	
DATE:	
PROJECT NO.:	
CONTRACT NO.:	
FILE NO.:	
FILE NAME:	
ANSI ID:	

DESIGNED BY: T.W.G.  
 DRAWN BY: T.W.G.  
 CHECKED BY: DR.  
 DATE: 03/07/2018  
 PROJECT NO.: W126G-17-D-0017  
 CONTRACT NO.: W126G-17-D-0017  
 FILE NO.:  
 FILE NAME:  
 ANSI ID:

U.S. ARMY ENGINEER DISTRICT,  
 CORPS OF ENGINEERS  
 FORT WORTH, TEXAS

FORT HOOD, TEXAS  
 DESIGN OF TEMP RENOVATIONS BLDG 44021

LIFE SAFETY PLAN  
 FIRST FLOOR

SHEET ID  
**LS-101**

Description	Area	Occupant Load Factor	No. of Persons	Exit Width	Exit Width/Person	Capacity
Less Concentrated Use W/ Out Fixed Seats	292 Sqft	15	20			
General and High Hazard Industrial	20,414 Sqft	100	205			
Business	1,370 Sqft	100	14			
Electric	408 Sqft	300	2			
Mechanical	756 Sqft	300	3			
Storage	2,757 Sqft	500	6			
<b>Total</b>	<b>25,997 Sqft</b>		<b>250 Persons</b>	<b>684 inches</b>	<b>0.2 Inches/Person</b>	<b>3,420 Persons</b>
				<b>0 inches</b>	<b>0.3 Inches/Person</b>	<b>0 Persons</b>
						<b>Total 3,420 Persons</b>

BUILDING WILL BE FULLY SPRINKLERED  
 TYPE I-B CONSTRUCTION  
 MIXED OCCUPANCY GENERAL INDUSTRIAL AND NEW BUSINESS  
 NO CHANGE IN OCCUPANCY, NO INCREASE IN BUILDING HEIGHT PER IBC 2015 TABLE 504.4

TOTAL ALLOWABLE FLOOR AREA - 46,500 S.F.  
 TOTAL ALLOWABLE BUILDING HEIGHT - 55.1'  
 1ST FLOOR - 28,679 S.F.  
 2ND FLOOR - 2,807 S.F.

FINISHES  
 CLASS A OR B IN EXITS AND EXIT ACCESS CORRIDORS PER NFPA 101 SECTION 40.3.3.1  
 CLASS A, B, OR C IN OTHER AREAS  
 CLASS I OR II FLOOR FINISHES PER NFPA 101 SECTION 40.3.3.3.1 AND 10.2.7

NUMBER OF MEANS OF EGRESS COMPLIES WITH NFPA 101 ACCORDANCE WITH NFPA 101 SECTION 40.2.5.1

THERE ARE NO DEAD END CORRIDORS - 50 FEET PER NFPA 101 ACCORDANCE WITH NFPA 101 SECTION 40.2.5.1

COMMON PATHS OF TRAVEL DO NOT EXCEED 100 FEET IN ACCORDANCE WITH NFPA 101 SECTION 40.2.5.1

TRAVEL DISTANCE DOES NOT EXCEED 250 FEET AS ALLOWED IN NFPA 101 SECTION 40.2.6.1

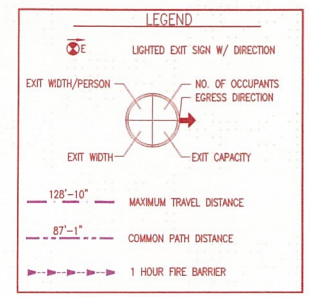
EMERGENCY LIGHTING SHALL COMPLY WITH NFPA 101 SECTION 7.8

PORTABLE FIRE EXTINGUISHERS ARE NOT REQUIRED PER UFC 3-600-01 SECTION 9-17.1

AUTOMATIC FIRE SPRINKLERS ON 1ST AND 2ND FLOORS SHALL BE DESIGNED AND INSTALLED IN ACCORDANCE WITH NFPA 13 AND UFC 3-600-01 8 AUGUST 2016, CHANGE 1, 28 NOVEMBER 2016

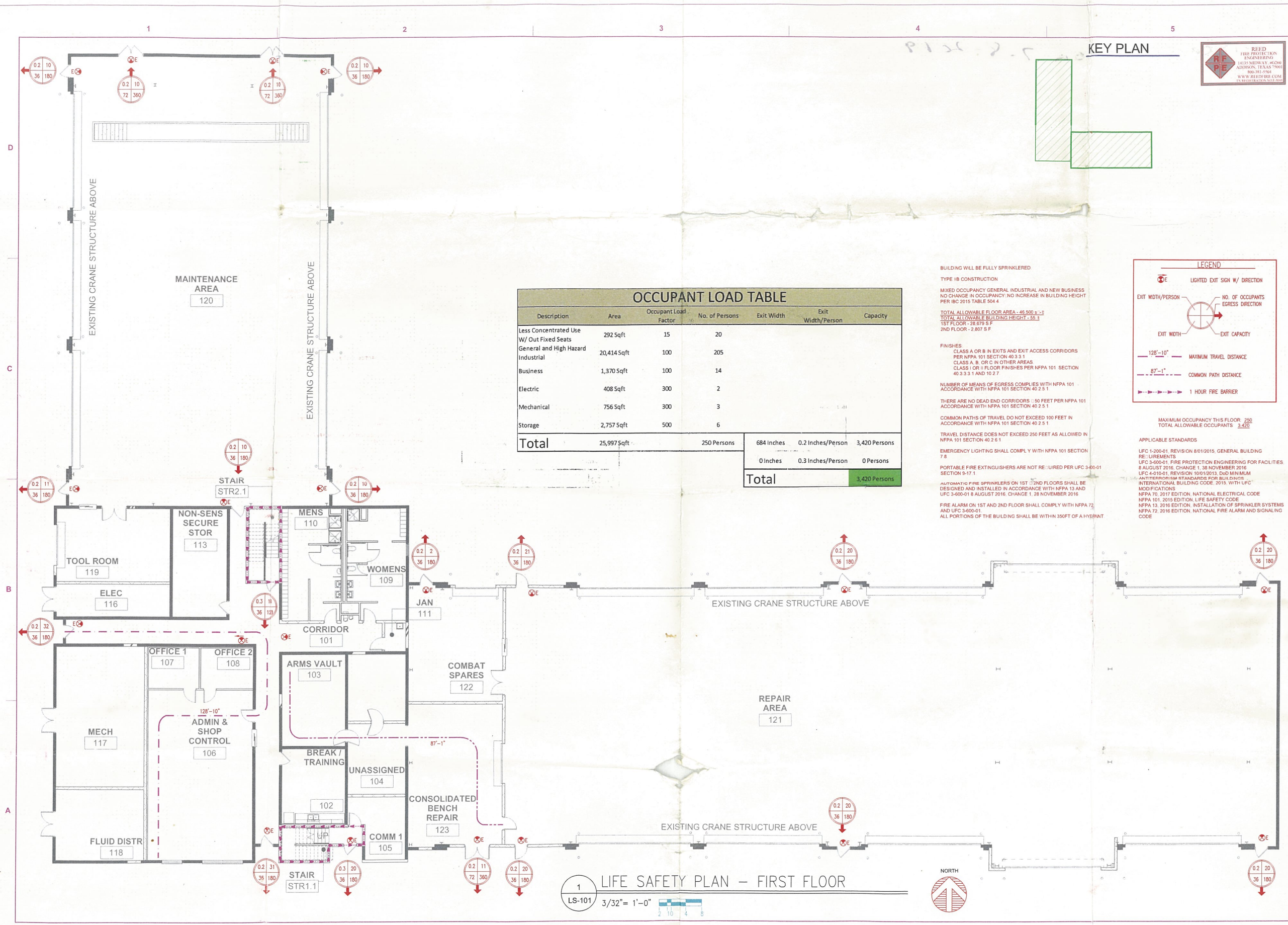
FIRE ALARM ON 1ST AND 2ND FLOOR SHALL COMPLY WITH NFPA 72 AND UFC 3-600-01

ALL PORTIONS OF THE BUILDING SHALL BE WITHIN 350 FT OF A HYDRANT



MAXIMUM OCCUPANCY THIS FLOOR 250  
 TOTAL ALLOWABLE OCCUPANTS 3,420

APPLICABLE STANDARDS  
 UFC 1-200-01, REVISION 8/01/2015, GENERAL BUILDING REQUIREMENTS  
 UFC 3-600-01, FIRE PROTECTION ENGINEERING FOR FACILITIES  
 8 AUGUST 2016, CHANGE 1, 28 NOVEMBER 2016  
 UFC 4-016-01, REVISION 10/01/2015, DOD MINIMUM ANTI-TERRORISM STANDARDS FOR BUILDINGS  
 INTERNATIONAL BUILDING CODE 2015, WITH UFC MODIFICATIONS  
 NFPA 70, 2017 EDITION, NATIONAL ELECTRICAL CODE  
 NFPA 101, 2015 EDITION, LIFE SAFETY CODE  
 NFPA 13, 2016 EDITION, INSTALLATION OF SPRINKLER SYSTEMS  
 NFPA 72, 2016 EDITION, NATIONAL FIRE ALARM AND SIGNALING CODE



1 LIFE SAFETY PLAN - FIRST FLOOR  
 3/32" = 1'-0"  
 0 2 4 8